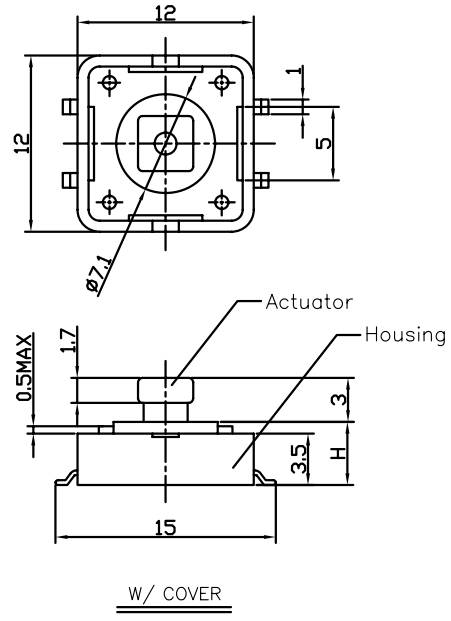
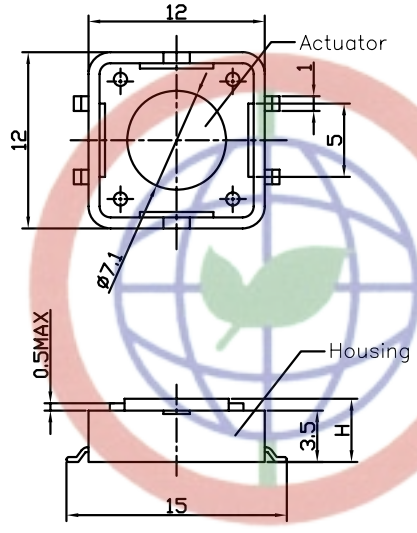


REV.	DESCRIPTION	DRAWN	CHECKED	APPROVED
A	NEW RELEASE	HP 13/06/05		

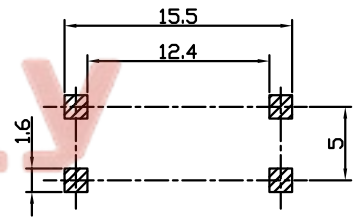


NOTES:

1. SPECIFICATIONS

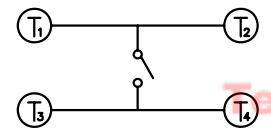
- switch function: Single pole Single throw
- contact rating: 50mA at 12vdc
- insulation resistance: 100MΩ min at 500vdc
- contact resistance: 100mΩ max
- operating life: 100,00 cycles
- operating force: see below
- stop strength: place the switch such that vertical, a static load of 3kgf shall be applied in the direction of stem, operation for a period of 15 secs.
- stroke: $(6 \times 6)0.25^{+0.2mm/-0.1mm}(12 \times 12)0.35 \pm 0.1mm$
- operation temperature range: -20°C to 70°C
- storage temperature range: -20°C to +70°C
- wave soldering: recommended solder temperature at 500°F(260°C)max. 5 seconds, subject to pcb 1.6mm thickness.
- hand soldering: use a soldering iron of 30 watts, controlled at 608°F(320°C)approximately 2 seconds while applying solder.

P.C.B.LAYOUT



RECOMMEND P.C.B.LAYOUT(Tolerance=±0.05)

SCHEMATIC



3. PRODUCT NUMBER CODE:

- DS1042 - X X X X X X
- Cover type
X: W/O cover
S: W/ cover
 - Packing type
A: polybag
B: tube
R: tape on reel
 - Actuator color
U: blue K: black N: brown R: red
Y: yellow S: Salmon
 - Housing color
U: blue K: black N: brown R: red
Y: yellow S: Salmon
 - Profile Height(DIM. H)
1: 4.3mm 2: 5.0mm 3: 7.0mm
4: 7.3mm 5: 9.5mm 6: 13.0mm
 - Size
2: 12mmX12mm


Tel: 86-574-63508787

Fax: 86-574-63510817

Email: sale@zhengxin.com.cn

http://www.zhengxin.com.cn

Address: West Lake Science and Technology Park, Ningbo, China

GENERAL TOLERANCE	ANGLE TOLERANCE	PROJECTION	TITLE
X. ±0.60	X. ±5°	UNITS	TACT SWITCH SMT TYPE
.X ±0.38	.X ±3°	SHEET SIZE	SERIES DS1042
.XX ±0.25	.XX ±2°		
DRAWING TYPE	CUSTOMER	 晨翔电子有限公司 CONNFLY CONNFLY ELECTRONIC CO. LTD	
SCALE	1:1 SHEET 1 OF 1		
DRAWING NO.	C-DS1042-XXXXXX		

REV.	DESCRIPTION	DRAWN	CHECKED	APPROVED
A	NEW RELEASE	HP 13/06/05		

NOTES:

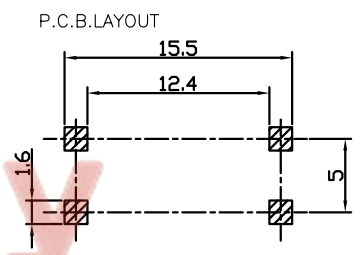
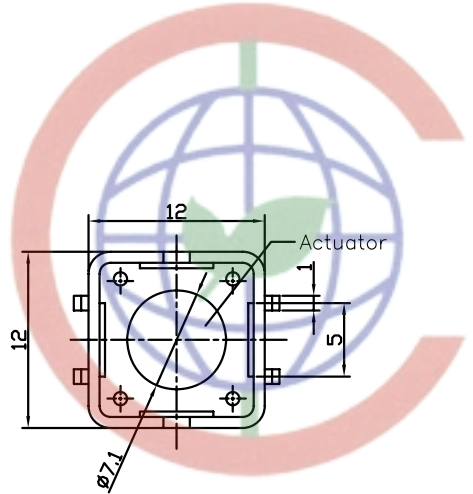
1. SPECIFICATIONS

- . switch function: Single pole Single throw
- . contact rating: 50mA at 12vdc
- . insulation resistance:100MΩ min at 500vdc
- . contact resistance:100mΩ max
- . operating life:100,00 cycles
- . operating force: see below
- . stop strength: place the switch such that vertical, a static load of 3kgf shall be applied in the direction of stem,operation for a period of 15 secs.
- . stroke: (6x6)0.25^{+0.2mm/-0.1mm}(12x12)0.35±0.1mm
- . operation temperature range: -20°C to 70°C
- . storage temperature range: -20°C to +70°C
- . wave soldering: recommended solder temperature at 500°F(260°C)max. 5 seconds,subject to pcb 1.6mm thickness.
- . hand soldering: usea soldering iron of 30 watts,controlled at 608°F(320°C)approximately 2 seconds while applying solder.

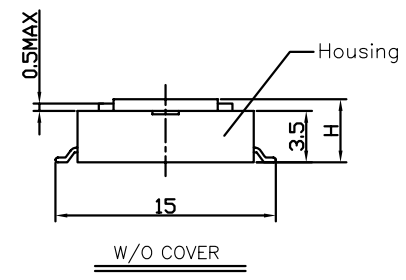
3. PRODUCT NUMBER CODE:

DS1042 - X X X X X X

- Cover type
X: W/O cover
- Packing type
A: polybag
B: tube
R: tape on reel
- Actuator color
U: blue K: black N: brown R: red
Y: yellow S: Salmon
- Housing color
U: blue K: black N: brown R: red
Y: yellow S: Salmon
- Profile Height(DIM. H)
1:4.3mm 2:5.0mm 3:7.0mm
4:7.3mm 5:9.5mm 6:13.0mm
- Size
2:12mmX12mm



RECOMMEND P.C.B.LAYOUT(Tolerance=±0.05)



Tel: 86-574-63508787

Fax: 86-574-63510817

GENERAL TOLERANCE		ANGLE TOLERANCE		PROJECTION		TITLE	TACT SWITCH SMT TYPE		
X.	±0.60	X.	±5°	UNITS	mm				
.X	±0.38	.X	±3°	SHEET SIZE	A4	SERIES	DS1042		
.XX	±0.25	.XX	±2°						
DRAWING TYPE		CUSTOMER			晨翔电子有限公司 CONNFLY CONNFLY ELECTRONIC CO. LTD				
SCALE		1:1	SHEET 1 OF 1						
DRAWING NO.		C-DS1042-XXXXXX							