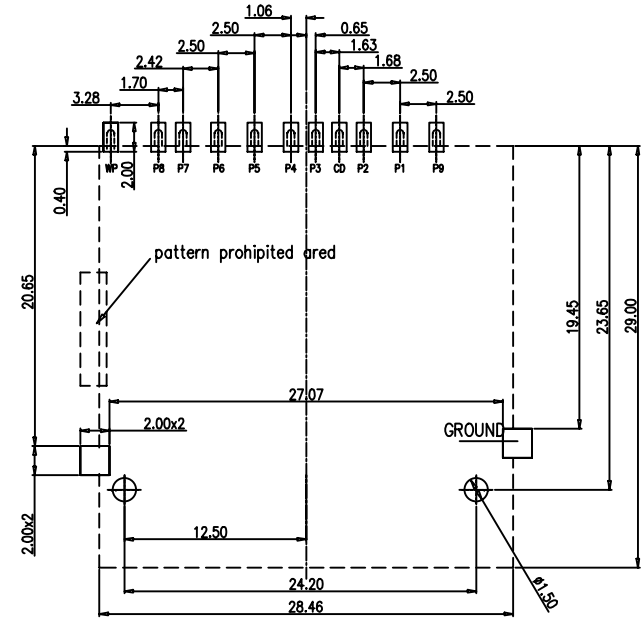
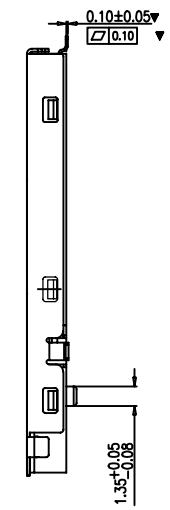
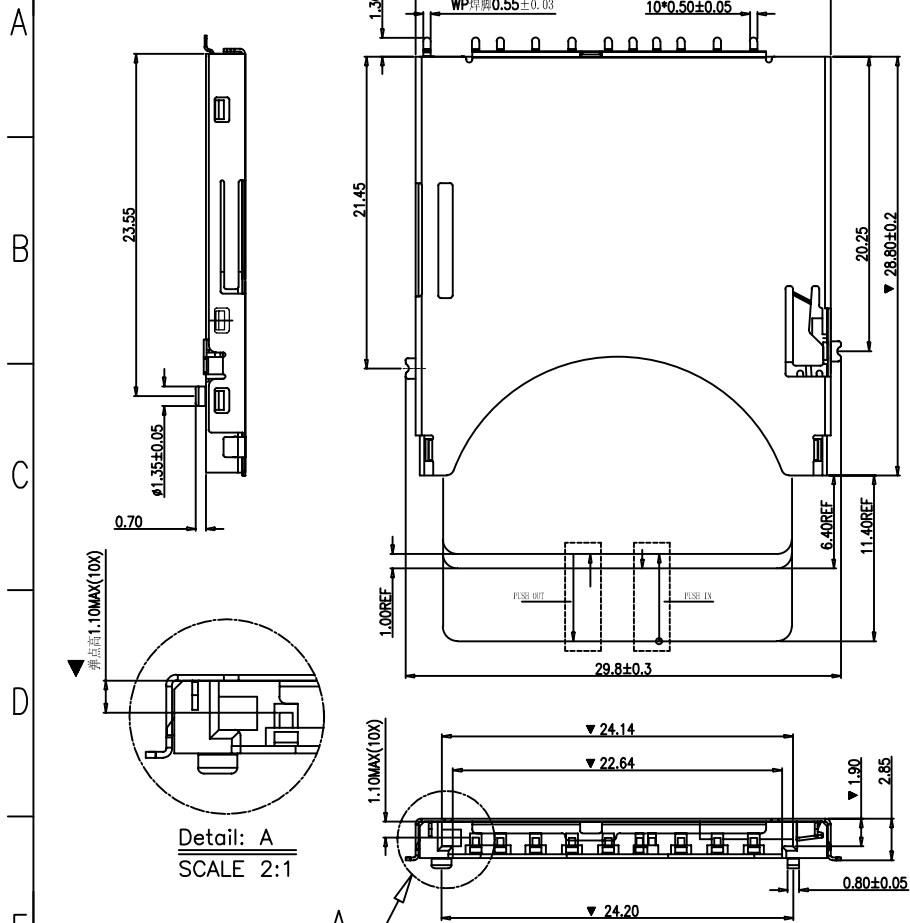


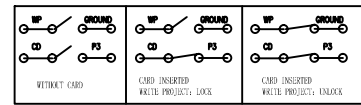
图号 SLZ0004

REV	DESCRIPTION	DRAWIN/DATE	CHECK/DATE	APPROVED/DATE
0	NEW RELEASE	PENG 2014/7/15		Cobber 2014/7/15



Recommended PCB Layout

- NOTE:
- MATERIAL:
INSULATOR:THERMOPLASTIC UL94V-0.
TERMINAL:COPPER ALLOY T=0.20mm.
SWITCH:COPPER ALLOY T=0.20mm.
SHELL:SUS T=0.20mm.
CRANK AXLE:SUS
 - PLATED:
CONTACT: AU PLATING AT CONTACT AREA.
120u" TIN PATING AT SOLDERING AREA.
50u" Ni UNPLATED OVERALL.
SHELL: 50u" Ni PLATING OVERALL.
 - MECHANICAL PERFORMANCE:
CONTACT MATING FORCE:2.0Kgf Max. at Full set
CONTACT UNMATING FORCE:600gf at full set
CYCLE LIFE:10000 TIMES.



SD CARD PIN DESIGN

Pin#	Name	Type	Description
P1	CD/DAT3	I/O/PP	Card Detect/ Data Line[Bit3]
P2	CMD	PP	Command/Response
P3	Vss1	S	Supply voltage ground
P4	VDD	S	Supply voltage
P5	CLK	I	Clock
P6	Vss2	S	Supply voltage ground
P7	DAT0	I/O/PP	Data Line [Bit 0]
P8	DAT1	I/O/PP	Data Line [Bit 1]
P9	DAT2	I/O/PP	Data Line [Bit 2]

GENERAL TOLERANCE	ANGLE TOLERANCE
X. ±0.38	X.' ±2.0'
.X ±0.30	.X' ±1.0'
.XX ±0.25	.XX' ±0.5'
.XXX ±0.20	

starfields

MAJOR(QC CHECKED) ▽ = 9 places	SCALE 1 : 1	DESIGN	PENG	DATE	7/15/14'	TITLE	SD CARD PUSH 外焊
CRITICAL: ▽ = * places	UNIT mm	CHECKED		DATE		SERIES	SD CARD SERIES SIZE A4
SHEET 1 OF 1		APPROVED		DATE		DRAWIN NO.	C5015-C-00 REV. 0