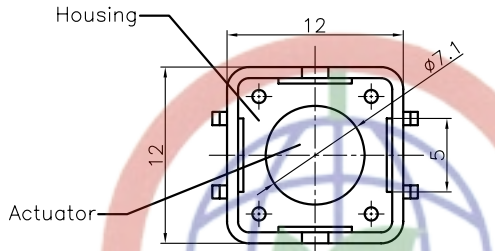


REV.	DESCRIPTION	DRAWN	CHECKED	APPROVED
A	NEW RELEASE	HP 23/06/05		

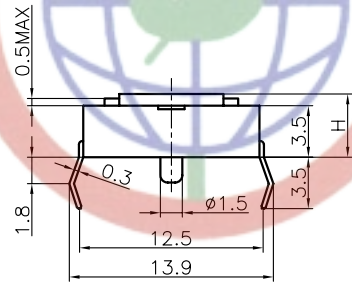


NOTES:

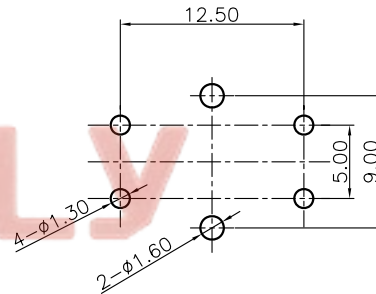
1. SPECIFICATIONS

- . switch function: Single pole Single throw
- . contact rating: 50mA at 12vdc
- . insulation resistance: 100MΩ min at 500vdc
- . contact resistance: 100mΩ max
- . operating life: 100,00 cycles
- . operating force: see below

- . stop strength: place the switch such that vertical, a static load of 3kgf shall be applied in the direction of stem, operation for a period of 15 secs.
- . stroke: $(6 \times 6) 0.25^{+0.2mm/-0.1mm} (12 \times 12) 0.35 \pm 0.1mm$
- . operation temperature range: -20°C to 70°C
- . storage temperature range: -20°C to +70°C
- . wave soldering: recommended solder temperature at 500°F (260°C) max. 5 seconds, subject to pcb 1.6mm thickness.
- . hand soldering: use soldering iron of 30 watts, controlled at 608°F (320°C) approximately 2 seconds while applying solder.



WITHOUT COVER

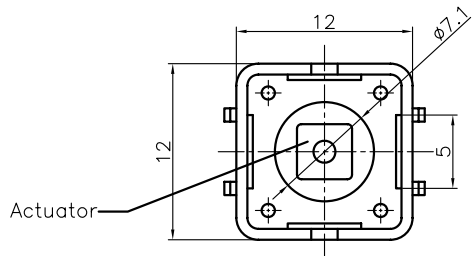


RECOMMEND P.C.B.LAYOUT
TOLERANCE=±0.05

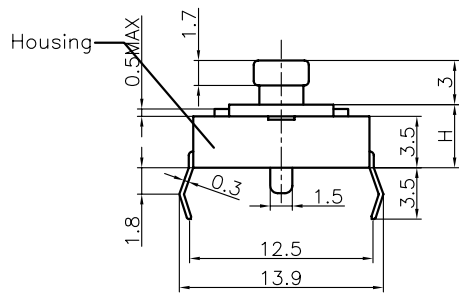
3. PRODUCT NUMBER CODE:

DS1041 - X X X X X X

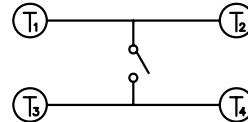
- Cover type
X: W/O cover
S: W/ cover
- Packing type
A: polybag
B: tube
R: tape & reel
- Actuator color
U: blue K: black N: brown R: red
S: Salmon Y: yellow
- Housing color
U: blue K: black N: brown R: red
S: Salmon Y: yellow
- Profile Height (DIM. H)
1: 4.3mm 2: 5.0mm 3: 7.0mm
4: 7.3mm 5: 9.5mm 6: 13.0mm
- Size
2: 12mm X 12mm



WITH COVER




SCHEMATIC



Tel: 86-574-63508787

Fax: 86-574-63510817

GENERAL TOLERANCE	ANGLE TOLERANCE	PROJECTION	TITLE	TACT SWITCH DIP TYPE
X. ±0.60	X. ±5°	UNITS	mm	
.X ±0.38	.X ±3°	SHEET SIZE	A4	SERIES DS1041
.XX ±0.25	.XX ±2°	 晨翔电子有限公司 CONNFLY CONNFLY ELECTRONIC CO. LTD		
DRAWING TYPE	CUSTOMER			
SCALE	1:1	SHEET	1 OF 1	
DRAWING NO.	C-DS1041-XXXXXX			