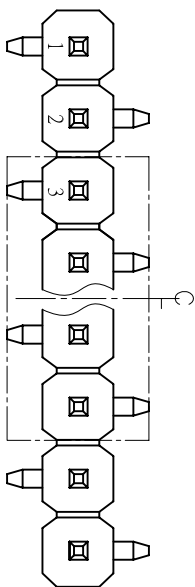


HSP

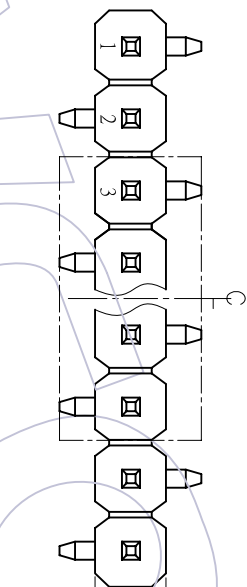
Recommended P.C.B. Layout(Top Side)
(PCB BOARD TOLERANCE±0.05)

NOTES:
Current Rating:3.0AMP
Contact Resistance:20mΩ max
Withstand Voltage:500V AC/DC
Insulation Resistance:1000MΩ min
Operation Temperature:-40°C to +105°C

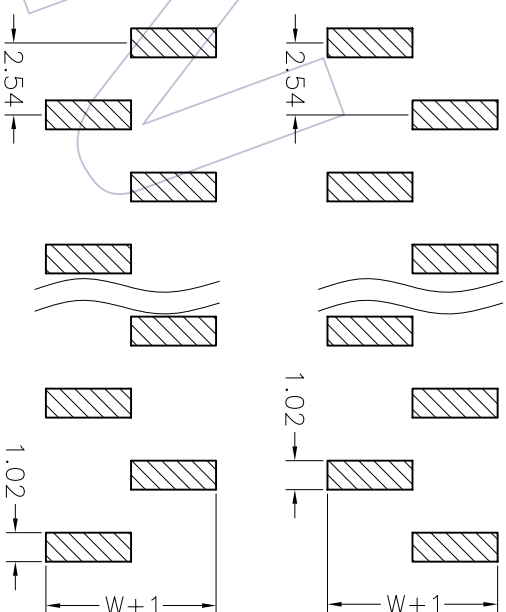
Contact Material:Brass
Contact plating:Au or Sn Over Ni
Insulator Material:PA6T+30%GF(UL94V-0)



TYPE 1



TYPE 2



Ordering Information

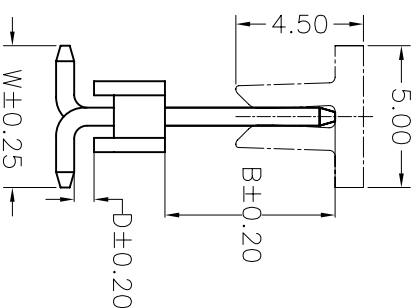
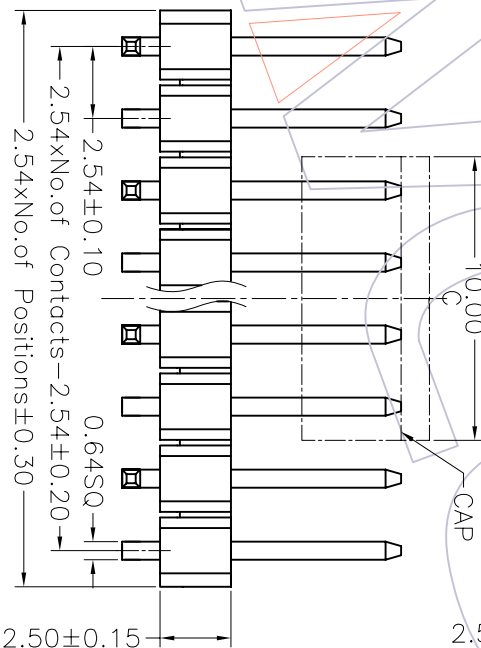
1125-1 1 XX XX M XXX TX

No. of Pins per Row: 01-40
Contact Plating
G0=Gold Flash
G1=3u"Gold
G2=5u"Gold
G3=10u"Gold
G4=15u"Gold
G5=30u"Gold
S0=Gold Flash/Tin
S1=3u"Gold/Tin
S2=5u"Gold/Tin
S3=10u"Gold/Tin
S4=15u"Gold/Tin
S5=30u"Gold/Tin
SN=Fin

Pin Length
L=B+D+2.5+ $\frac{W}{2}$

Packing
T=Tube
P=Tube+CAP
R=Tape&Reel+CAP

Series No.
1=Type 1
2=Type 2



| Dimension antitheses list | | | |
|---------------------------|------|------|------|
| ITEM | W | B | D |
| Standard | 5.00 | 6.00 | 0.70 |
| Alternate | | | |

| | | | | | | | | | |
|-----|----------|--------------------------|----------------|--|-----------------|-------|-----------------|-------------------|-----------------------------|
| REV | DATE | MODIFICATION DESCRIPTION | CHANGE APPROVE | OPERATION | DRAW | WEIXD | SCALE | PART NO. | TITLE: |
| A0 | 08/03/31 | NEW | | XXX ±0.40 XXX ±0.25 XXX ±0.15 | DESIGN CHECK | | 4:1 mm A4 | 1125-11XXXXMXXXTX | PH2.54 SINGLE ROW SMT H=2.5 |
| 1 | | | | Angle ± 3' | CHECK | | 1/1 | | |
| | | | | DIM TOL | APPROVE | | PROU. | Customer NO. | |

WCON 维峰五金电子有限公司
WAVE HARDWARE ELECTRONICS CO.,LTD