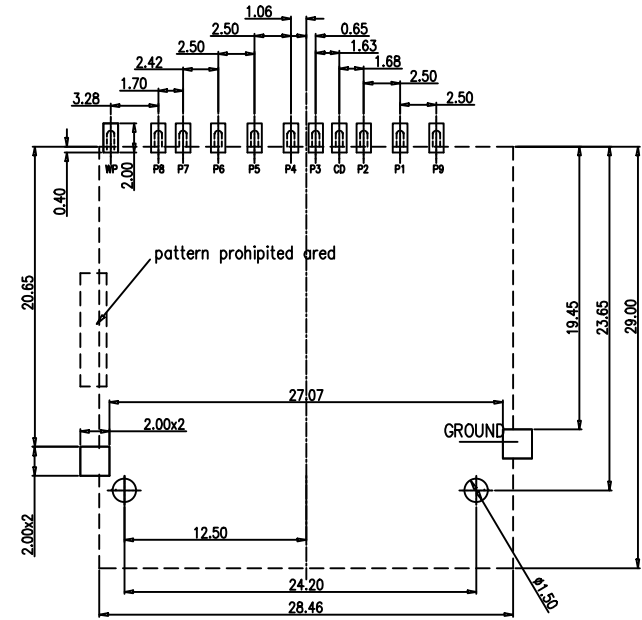
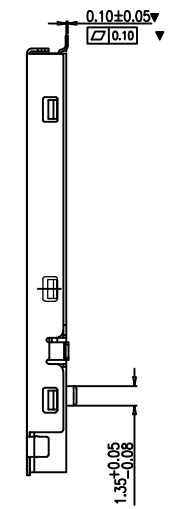
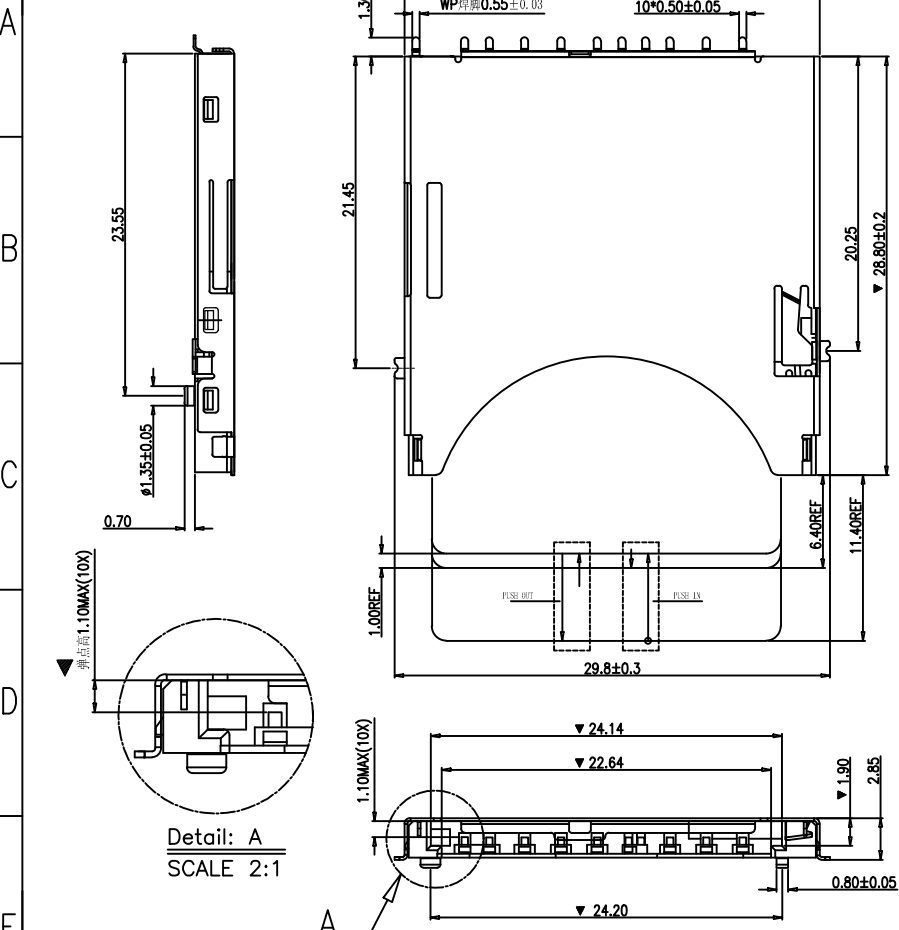


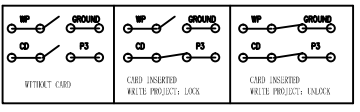
图号 SLZ0004

REV	DESCRIPTION	DRAWIN/DATE	CHECK/DATE	APPROVED/DATE
0	NEW RELEASE	PENG 2014/7/15		Cobber 2014/7/15



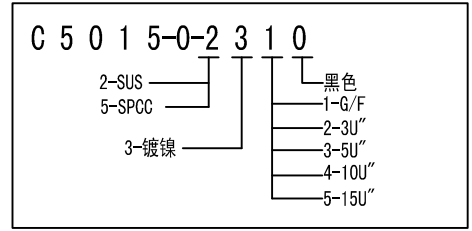
Recommended PCB Layout

NOTE:
 1. MATERIAL:
 INSULATOR: THERMOPLASTIC UL94V-0.
 TERMINAL: COPPER ALLOY T=0.20mm.
 SWITCH: COPPER ALLOY T=0.20mm.
 SHELL: SUS T=0.20mm.
 CRANK AXLE: SUS
 2. PLATED:
 CONTACT: AU PLATING AT CONTACT AREA.
 120u" TIN PATING AT SOLDERING AREA.
 50u" Ni UNPLATED OVERALL.
 SHELL: 50u" Ni PLATING OVERALL.
 3. MECHANICAL PERFORMANCE:
 CONTACT MATING FORCE: 2.0Kgf Max. at Full set
 CONTACT UNMATING FORCE: 600gf at full set
 CYCLE LIFE: 10000 TIMES.



SD CARD PIN DESIGN

Pin#	Name	Type	Description
P1	CD/DAT3	I/O/PP	Card Detect/ Data Line [Bit3]
P2	CMD	PP	Command/Response
P3	Vss1	S	Supply voltage ground
P4	VDD	S	Supply voltage
P5	CLK	I	Clock
P6	Vss2	S	Supply voltage ground
P7	DAT0	I/O/PP	Data Line [Bit 0]
P8	DAT1	I/O/PP	Data Line [Bit 1]
P9	DAT2	I/O/PP	Data Line [Bit 2]



GENERAL TOLERANCE	ANGLE TOLERANCE
X. ±0.38	X.' ±2.0°
.X ±0.30	.X' ±1.0°
.XX ±0.25	.XX' ±0.5°
.XXX ±0.20	

深圳市硕凌电子科技有限公司

MAJOR(QC CHECKED) ▼ = 9 places	SCALE 1 : 1	DESIGN	PENG	DATE	7/15/14'	TITLE	SD CARD PUSH 外焊
CRITICAL: ▽ = * places	UNIT mm	CHECKED		DATE		SERIES	SD CARD SERIES SIZE A4
SHEET 1 OF 1	APPROVED	DATE		DATE		DRAWIN NO.	C5015-C-00 REV. 0